

## **A Few Examples of ATV Trespass of Road Closure Barriers**

**Compiled December 2018 by Keith Hammer**

Following are a few examples of all-terrain vehicle (ATV) trespass of roads closed on the Flathead National Forest to motorized use, using earth berms and /or boulders to prevent motorized access. These are examples of closures demonstrated to be ineffective in preventing motorized access that were subsequently rebuilt, but appear to remain ineffective. All photos were taken by Keith Hammer:

Attached to this pdf is an email sent from Keith Hammer to Spotted Bear District Ranger Deb Mucklow with photos showing the berm closure on Bunker Creek Road #549 was being driven over by full-size motor vehicles. Road #549 and others in the Bunker Creek watershed have been closed to motor vehicles since March 1996 "to protect wildlife habitat."

Below is a photo of this same earth berm taken on 8/28/14, showing that ATVs are still/once again driving over the top of the berm:



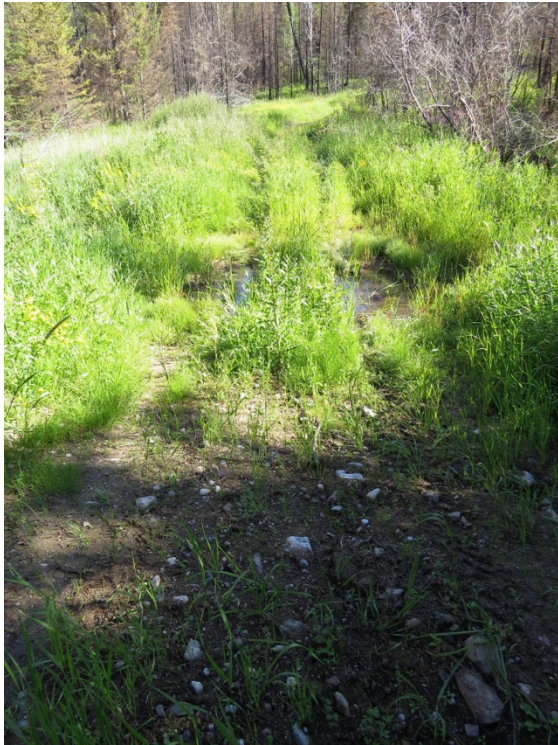
The photos below, also taken on 8/28/18, shows ATV tracks some six miles up Road #549, on Road #2820 (Middle Fork Bunker) at its junction with Road #549 and above:



Below is a 7/22/16 photo of the berm closure at the start of Road #1678 near Spotted Bear. Though this was a “reclaimed” road considered “historic” and removed from the road “system,” it had not received full reclamation work and an ATV had recently driven through the brush on the right side of the berm and continued up the road for nearly its full length.



Below is a photo taken the same day, showing ATV tracks heading up the road several hundred yards behind the berm closure:



Below is a photo taken 8/15/18 of the new, smaller earth berm installed after a couple logging projects, one of which removed the trees to the left, allowing for easier vehicle trespass. Under the Trail Creek Fire Salvage Project, this road is again considered “reclaimed,” remains on the road “system,” but is not counted in Total Road Density:



Below is a 6/23/13 photo of a detour used by full-size motor vehicles and ATVs to trespass behind a boulders-and-berm closure blocking off a closed Forest Service road in Krause Basin (the open Strawberry Lake Road is shown to the left):



Below is a 5/27/14 photo of ATVs violating the road closure, looking directly over the boulders that close the road, which continues to be used for mud-bogging and a party / bonfire area:



When the Forest Service put a berm on the existing detour around the boulders, full-size motor vehicles and ATVs simply established another detour through the woods on the opposite side of the boulders, as shown in the 6/14/18 photos below:



Some ATVs instead simply squeeze through or over the boulder closure, as shown in the 9/24/14 photo below:



To: "mucklow, debbie" <dmucklow@fs.fed.us>  
From: Keith Hammer <keith@swanview.org>  
Subject: Bunker Creek OHV Trespass  
Cc: "montgomery, arlene" <arlene...snip...jgatchell@wildmontana.org>

Deb;

Was up in the Spotted Bear area Sunday and see that the road closure berm on Bunker Creek Road is ineffective and is being driven over by full-size vehicles!

This is quite a disappointment, especially given its proximity to your offices and the importance of this closure for wildlife security in Bunker Creek.

We ask that you fix and reinforce this barrier ASAP as big game hunting is underway and the vehicle tracks I saw and photographed are quite fresh behind the berm.

Please let us know when and how you have corrected this problem.

Here are the photos I took:



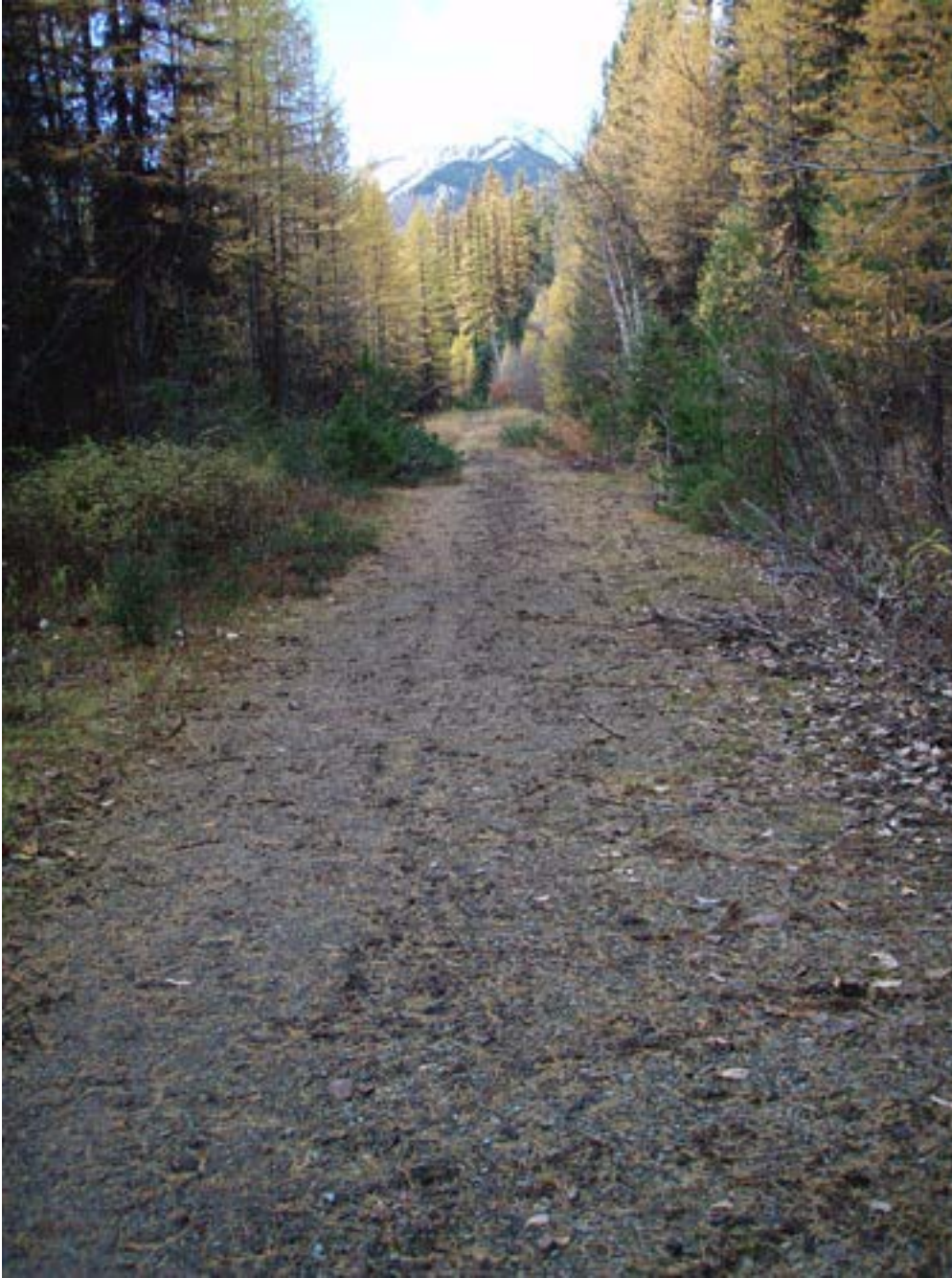
Road end, trailhead and detour over shaved berm.



Wide tire tracks leading to detour over berm.



Narrower tire tracks over and around the berm - fairly fresh.



Relatively fresh tire tracks 30 yards behind the closure. One of the evergreen trees on the roadway, left, had been cut down and left - perhaps because it had been leaning over the road tread.

Thank you for your attention to this matter.

Keith